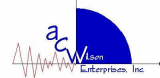


Reliability is Key

ACWEI wants to put you in the drivers seat when it comes to your control options. The SCS was designed to do just that. It is not and never was a control system designed to catch up to the industry but in fact lead it. With nearly 20 years of retrofit experience ACWEI has not put together a control retrofit but a control systems answer. It will fit any molding machine with any option anywhere, period. You have the machine, the prints/ drawings, & 4-5 weeks of time, then when have the solution.



- *Reliable Warranted Sigmatek Parts*
- *Completely Engineered*
- *Quick Installation with Training*
- *No Hassle Support and Service*



A. C. Wilson Enterprises, Inc.

15035 Berkshire Industrial Pky
Middlefield, OH 44062

Phone: East 440 834 9482 West 702 448 2876
Fax: 440 834 1449
E-mail: sales@acwei.com



Efficient Service Economically
Rendered

Are you tired of OEM Voodoo...

... then the ACWEI SCS may be for you!



East: 440 834 9482 West: 702 448 2876

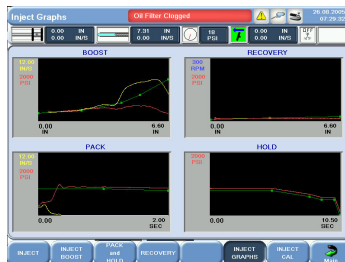
Familiar & Easy Navigation



Familiar layout provides for easy navigation



File management for saving mold setups and calibration data.



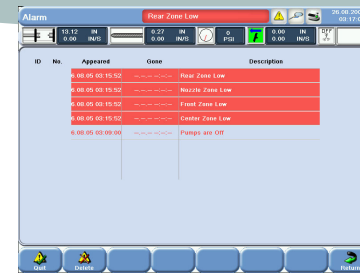
Fully interactive process control and graphing

Give ACWEI a closer look!

The engineers at ACWEI have long and extensive histories with Van Dorn machines. From software to hardware to installation, the engineers at ACWEI have over 70 years combined experience with Van Dorn product lines and well over 100 years experience in the injection molding industry. The service techs of ACWEI consulted and guided Van Dorn through some of their first retrofits some 15 years ago. We at ACWEI upgraded many presses to the P3000/5000 for VD/DPG and have been installing controls for more than 20 years. ACWEI has assembled a controller using proven and fully supported Sigmatek components and all of these resources can all be brought to your facility directly.

ACWEI SCS Standard Features

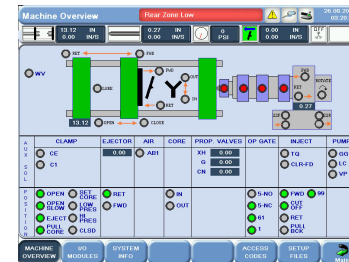
- Closed-loop process control for all injection functions
- Interactive (Drag-n-Drop) profile control
- USB port for mold setup storage and print functions
- 12" XGA Hi-res color touch screen
- Auto-tune barrel temp. Control w/graphics
- Compatibility with plant monitoring systems
- Try-again, Auto-purge, 2 Airblow, & Std Core Funcs
- Web-based remote Ethernet access
- Production data system with programmable alarms
- 1-year parts warranty
- 1-year labor warranty
- Alarm history & change log
- Complete schematics & documentation



Alarm monitoring & history with change log

	LARGE CYCLE	MINIMUM	MAXIMUM	AVERAGE
Cutoff Position	0.00	0.00	0.00	0.00
Cycle Time	0.00	0.00	0.00	0.00
Cutoff Pressure	0	0	0	0
Cutoff Time	0.00	0.00	0.00	0.00
Peak Boost Spd.	0.00	0.00	0.00	0.00
Peak Boost Pres.	0	0	0	0
Peak Pack Pres.	0.00	0.00	0.00	0.00

Configurable SPC monitoring



Diagnostic screens to aid in trouble shooting right from the OP

Starting @ \$16,995 installed

A. C. Wilson Enterprises, Inc.
15035 Berkshire Industrial Pky
Middlefield, OH 44062

Phone: East 440 834 9482 West 702 448 2876
Fax: 440 834 1449
E-mail: sales@acwei.com