

# VENUS SERIES ALL ELECTRIC INJECTION MOLDING MACHINE

## VE2300

### Metric Datasheet

#### CLAMPING UNIT

Clamping force (kN)				2300
Toggle stroke (mm)				550
Min. mold height (mm)				220
Max. mold height (mm)				600
Max. mold opening stroke (mm)				1150
Space between tie bars (mm)		620	x	570
Min. mold dimension (mm)		400	x	370
Ejector stroke (mm)				150
Ejector force (kN)				49
Mold platen dimension (mm)		930	x	880

INJECTION UNIT	580h - high speed			580 - standard			750h - high speed			750 - standard			
	A	B	C	A	B	C	A	B	C	A	B	C	
Screw diameter (mm)	40	45	50	40	45	50	45	50	55	45	50	55	
Screw L/D ratio	22.5	20	18	22.5	20	18	22.2	20	18	22.2	20	18	
Shot size (theoretical)	252	319	395	252	319	395	334	412	499	334	412	499	
Injection weight (g)	229	290	358	229	290	358	304	375	454	304	375	454	
Injection speed (mm/sec)		250			150			250			150		
Injection rate (g/sec)	285	360	445	171	216	267	362	446	594	217	267	324	
Injection pressure	(Mpa)	228	180	146	228	180	146	222	180	149	222	180	149
	(bar)	2320	1830	1490	2320	1830	1490	2260	1830	1520	2260	1830	1520
Holding pressure	(Mpa)	202	160	130	202	160	130	197	160	132	197	160	132
	(bar)	2060	1630	1320	2060	1630	1320	2010	1630	1340	2010	1630	1340
Screw speed (rpm)	350	350	350	350	350	350	320	320	320	320	320	320	
Plasticizing capacity (g/sec)	27	39	50	27	39	50	35	46	60	35	46	60	
Nozzle touch force (kN)					49						49		
Nozzle movement distance (mm)					415						445		
Heating power (kW)	12.3	12.3	12.3	12.3	12.3	12.3	14.3	14.3	14.3	14.3	14.3	14.3	

#### OTHERS

Connection power (kW)		57			39			65				47.5
Hopper capacity (liter)			25			25			50			50
Machine dimension (l x w x h) (m)	6.17	x	1.87	x	2.38		6.41	x	1.87	x	2.38	
Machine weight (metric ton)				10.6						11.7		



Specifications subject to change without notice.

# VENUS SERIES ALL ELECTRIC INJECTION MOLDING MACHINE

## VE2300

### English Datasheet

#### CLAMPING UNIT

Clamping force (US tons)		259	
Toggle stroke (in)		21.65	
Min. mold height (in)		8.66	
Max. mold height (in)		23.62	
Max. mold opening stroke (in)		45.28	
Space between tie bars (in)	24.41	x	22.44
Min. mold dimension (in)	15.75	x	14.57
Ejector stroke (in)		5.91	
Ejector force (US tons)		5.51	
Mold platen dimension (in)	36.61	x	34.65

INJECTION UNIT	580h - high speed			580 - standard			750h - high speed			750 - standard		
	A	B	C	A	B	C	A	B	C	A	B	C
Screw diameter (in)	1.57	1.77	1.97	1.57	1.77	1.97	1.77	1.97	2.17	1.77	1.97	2.17
Screw L/D ratio	22.5	20	18	22.5	20	18	22.2	20	18	22.2	20	18
Shot size (theoretical) (cu. cm)	252	319	395	252	319	395	334	412	499	334	412	499
Injection weight (oz. GPPS)	8.08	10.23	12.63	8.08	10.23	12.63	10.72	13.23	16.01	10.72	13.23	16.01
Injection speed (in/sec)		9.84			5.91			9.84			5.91	
Injection rate (oz./sec)	10.05	12.70	15.70	6.03	7.62	9.42	12.77	15.73	20.95	7.65	9.42	11.43
Injection pressure	(psi)	33069	26107	21176	33069	26107	21176	32199	26107	21611	32199	26107
	(bar)	2320	1830	1490	2320	1830	1490	2260	1830	1520	2260	1830
Holding pressure	(psi)	29298	23206	18855	29298	23206	18855	28573	23206	19145	28573	23206
	(bar)	2060	1630	1320	2060	1630	1320	2010	1630	1340	2010	1630
Screw speed (rpm)	350	350	350	350	350	350	320	320	320	320	320	320
Plasticizing capacity (oz./sec)	0.95	1.38	1.76	0.95	1.38	1.76	1.23	1.62	2.12	1.23	1.62	2.12
Nozzle touch force (US tons)			5.5						5.5			
Nozzle movement distance (in)			16.34						17.52			
Heating power (kW)	3.8	5.4	5.4	3.8	5.4	5.4	3.8	5.4	5.4	3.8	5.4	5.4

#### OTHERS

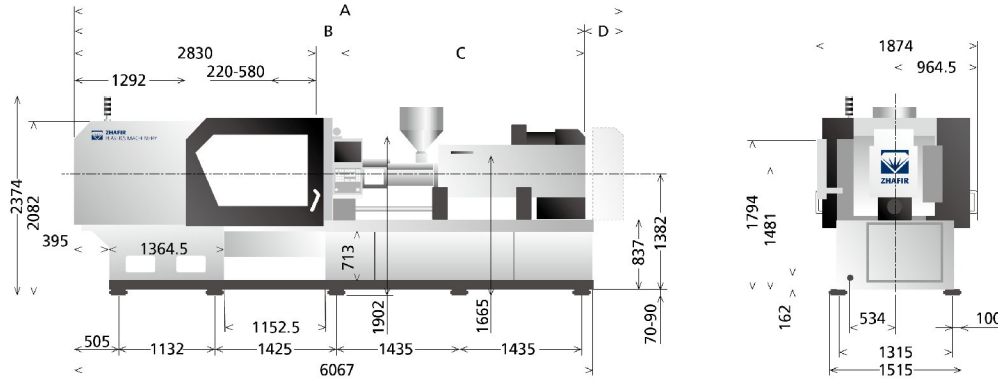
Connection power (kW)		57		39		65		47.5		
Hopper capacity (lbs GPPS)		35		35		71		71		
Machine dimension (l x w x h)	244	x	75	x	95	254	x	75	x	95
Machine weight (lbs)			23373					25799		



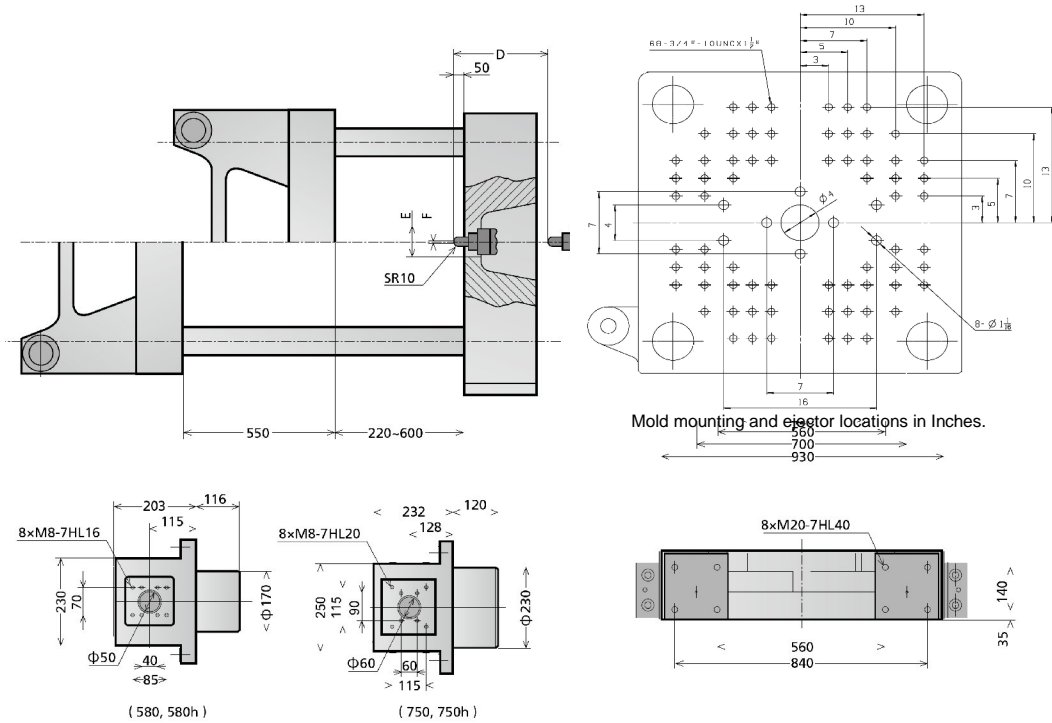
Specifications subject to change without notice.

unit: mm

Machine dimensions VE2300



Platen dimensions VE2300



	A	B	C	D	E	F
580, 580h	6173	5758	2626	415	Φ160	Φ3
750, 750h	6415	5970	2838	445	Φ160	Φ3