

# VENUS SERIES ALL ELECTRIC INJECTION MOLDING MACHINE

## VE1900

### Metric Datasheet

#### CLAMPING UNIT

Clamping force (kN)				1900
Toggle stroke (mm)				470
Min. mold height (mm)				200
Max. mold height (mm)				550
Max. mold opening stroke (mm)				1020
Space between tie bars (mm)		570	x	520
Min. mold dimension (mm)		370	x	335
Ejector stroke (mm)				130
Ejector force (kN)				44.1
Mold platen dimension (mm)		855	x	810

INJECTION UNIT	430h - high speed			430 - standard			580h - high speed			580 - standard			
	A	B	C	A	B	C	A	B	C	A	B	C	
Screw diameter (mm)	36	40	45	36	40	45	40	45	50	40	45	50	
Screw L/D ratio	23.3	21	18.7	23.3	21	18.7	22.5	20	18	22.5	20	18	
Shot size (theoretical)	173	213	270	173	213	270	252	319	395	252	319	395	
Injection weight (g)	157	194	246	157	194	246	229	290	358	229	290	358	
Injection speed (mm/sec)		300			150			250			150		
Injection rate (g/sec)	277	342	434	139	171	217	285	360	445	171	216	267	
Injection pressure	(Mpa)	247	200	158	247	200	158	228	180	146	228	180	146
	(bar)	2520	2040	1610	2520	2040	1610	2320	1830	1490	2320	1830	1490
Holding pressure	(Mpa)	197	160	126	197	160	126	202	160	130	202	160	130
	(bar)	2010	1630	1280	2010	1630	1280	2060	1630	1320	2060	1630	1320
Screw speed (rpm)	400	400	400	400	400	400	350	350	350	350	350	350	
Plasticizing capacity (g/sec)	22	30	42	22	30	42	27	39	50	27	39	50	
Nozzle touch force (kN)											39.2		
Nozzle movement distance (mm)											415		
Heating power (kW)	11.1	11.1	11.1	11.1	11.1	11.1	12.3	12.3	12.3	12.3	12.3	12.3	

#### OTHERS

Connection power (kW)		43.3			32.3			57			39
Hopper capacity (liter)		25			25			25			25
Machine dimension (l x w x h) (m)	5.68	x	1.73	x	2.26		5.92	x	1.73	x	2.26
Machine weight (metric ton)					9.3						9.8



Specifications subject to change without notice.

# VENUS SERIES ALL ELECTRIC INJECTION MOLDING MACHINE

## VE1900

### English Datasheet

#### CLAMPING UNIT

Clamping force (US tons)		214	
Toggle stroke (in)		18.50	
Min. mold height (in)		7.87	
Max. mold height (in)		21.65	
Max. mold opening stroke (in)		40.16	
Space between tie bars (in)	22.44	x	20.47
Min. mold dimension (in)	14.57	x	13.19
Ejector stroke (in)		5.12	
Ejector force (US tons)		4.96	
Mold platen dimension (in)	33.66	x	31.89

INJECTION UNIT	430h - high speed			430 - standard			580h - high speed			580 - standard		
	A	B	C	A	B	C	A	B	C	A	B	C
Screw diameter (in)	1.42	1.57	1.77	1.42	1.57	1.77	1.57	1.77	1.97	1.57	1.77	1.97
Screw L/D ratio	23.3	21	18.7	23.3	21	18.7	22.5	20	18	22.5	20	18
Shot size (theoretical) (cu. cm)	173	213	270	173	213	270	252	319	395	252	319	395
Injection weight (oz. GPPS)	5.54	6.84	8.68	5.54	6.84	8.68	8.08	10.23	12.63	8.08	10.23	12.63
Injection speed (in/sec)		11.81			5.91			9.84			5.91	
Injection rate (oz./sec)	9.77	12.06	15.31	4.90	6.03	7.65	10.05	12.70	15.70	6.03	7.62	9.42
Injection pressure	(psi)	35825	29008	22916	35825	29008	22916	33069	26107	21176	33069	26107
	(bar)	2520	2040	1610	2520	2040	1610	2320	1830	1490	2320	1830
Holding pressure	(psi)	28573	23206	18275	28573	23206	18275	29298	23206	18855	29298	23206
	(bar)	2010	1630	1280	2010	1630	1280	2060	1630	1320	2060	1630
Screw speed (rpm)	400	400	400	400	400	400	350	350	350	350	350	350
Plasticizing capacity (oz./sec)	0.78	1.06	1.48	0.78	1.06	1.48	0.95	1.38	1.76	0.95	1.38	1.76
Nozzle touch force (US tons)			4.4						4.4			
Nozzle movement distance (in)			14.96						16.34			
Heating power (kW)	3.8	5.4	5.4	3.8	5.4	5.4	3.8	5.4	5.4	3.8	5.4	5.4

#### OTHERS

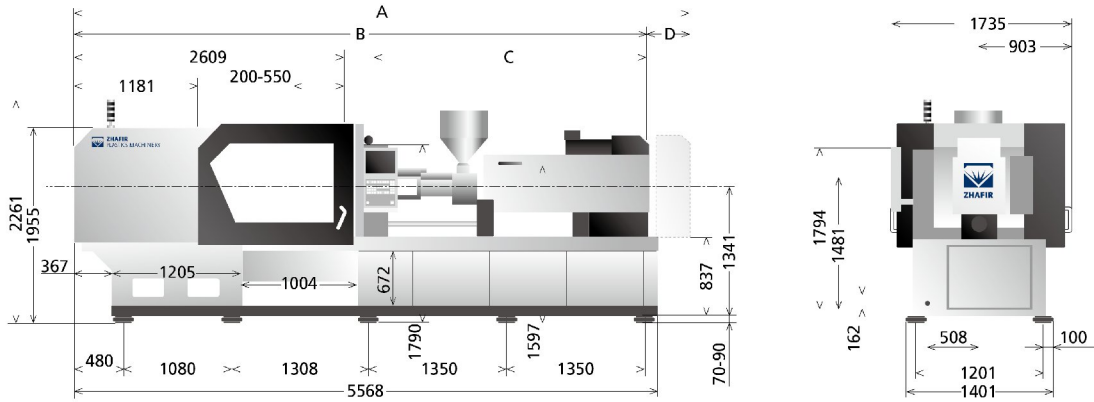
Connection power (kW)		43.3		32.3		57		39		
Hopper capacity (lbs GPPS)		35		35		35		35		
Machine dimension (l x w x h)	225	x	69	x	90	234	x	69	x	90
Machine weight (lbs)			20507					21609		



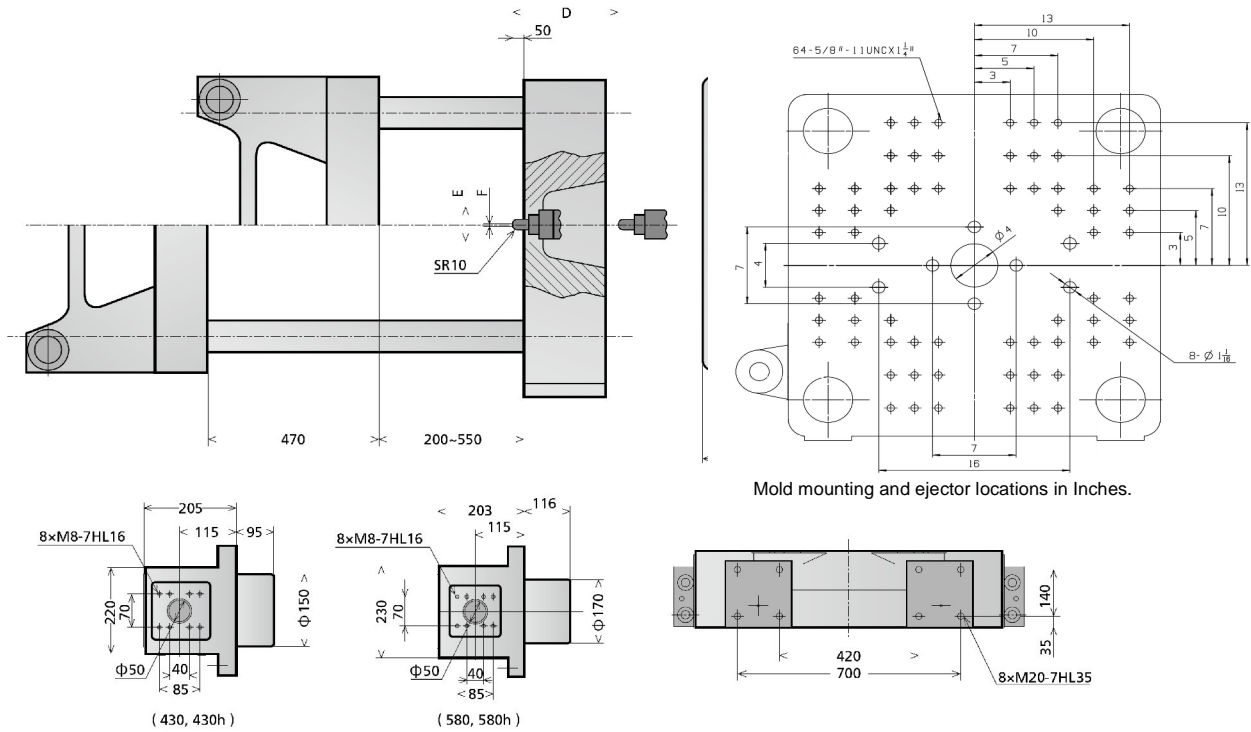
Specifications subject to change without notice.

unit: mm

Machine dimensions VE1900



Platen dimensions VE1900



	A	B	C	D	E	F
430, 430h	5680	5300	2418	380	Φ125	Φ3
580, 580h	5923	5508	2626	415	Φ160	Φ3