

VENUS SERIES ALL ELECTRIC INJECTION MOLDING MACHINE

VE1200

Metric Datasheet

CLAMPING UNIT

Clamping force (kN)			1200
Toggle stroke (mm)			360
Min. mold height (mm)			150
Max. mold height (mm)			460
Max. mold opening stroke (mm)			820
Space between tie bars (mm)	470	x	420
Min. mold dimension (mm)	305	x	270
Ejector stroke (mm)			100
Ejector force (kN)			29.4
Mold platen dimension (mm)	710	x	660

INJECTION UNIT	210h - high speed			210 - standard			300h - high speed			300 - standard		
	A	B	C	A	B	C	A	B	C	A	B	C
Screw diameter (mm)	28	32	36	28	32	36	32	36	40	32	36	40
Screw L/D ratio	21	21	18.6	21	21	18.6	22.5	20	18	22.5	20	18
Shot size (theoretical)	70	100	127	70	100	127	116	147	182	116	147	182
Injection weight (g)	64	91	116	64	91	116	106	134	166	106	134	166
Injection speed (mm/sec)		350			150			300			150	
Injection rate (g/sec)	196	256	324	84	110	139	220	277	342	110	139	171
Injection pressure	(Mpa)	260	200	160	260	200	160	253	200	162	253	200
	(bar)	2650	2040	1630	2650	2040	1630	2580	2040	1650	2580	2040
Holding pressure	(Mpa)	206	160	126	206	160	126	202	160	130	202	160
	(bar)	2100	1630	1280	2100	1630	1280	2060	1630	1320	2060	1630
Screw speed (rpm)	400	400	400	400	400	400	400	400	400	400	400	400
Plasticizing capacity (g/sec)	11	16	22	11	16	22	11	16	22	11	16	22
Nozzle touch force (kN)				24.5						24.5		
Nozzle movement distance (mm)				330						350		
Heating power (kW)	7	8.6	8.6	7	8.6	8.6	8.6	8.6	8.6	8.6	8.6	8.6

OTHERS

Connection power (kW)		31			20			36.7			25.7
Hopper capacity (liter)		25			25			25			25
Machine dimension (l x w x h) (m)	4.6	x	1.49	x	2		4.83	x	1.49	x	2
Machine weight (metric ton)			5.4						5.9		



Specifications subject to change without notice.

VENUS SERIES ALL ELECTRIC INJECTION MOLDING MACHINE

VE1200

English Datasheet

CLAMPING UNIT

Clamping force (US tons)		135	
Toggle stroke (in)		14.17	
Min. mold height (in)		5.91	
Max. mold height (in)		18.11	
Max. mold opening stroke (in)		32.28	
Space between tie bars (in)	18.50	x	16.54
Min. mold dimension (in)	12.01	x	10.63
Ejector stroke (in)		3.94	
Ejector force (US tons)		3.30	
Mold platen dimension (in)	27.95	x	25.98

INJECTION UNIT	210h - high speed			210 - standard			300h - high speed			300 - standard		
	A	B	C	A	B	C	A	B	C	A	B	C
Screw diameter (in)	1.10	1.26	1.42	1.10	1.26	1.42	1.26	1.42	1.57	1.26	1.42	1.57
Screw L/D ratio	21	21	18.6	21	21	18.6	22.5	20	18	22.5	20	18
Shot size (theoretical) (cu. cm)	70	100	127	70	100	127	116	147	182	116	147	182
Injection weight (oz. GPPS)	2.26	3.21	4.09	2.26	3.21	4.09	3.74	4.73	5.86	3.74	4.73	5.86
Injection speed (in/sec)		13.78			5.91			11.81			5.91	
Injection rate (oz./sec)	6.91	9.03	11.43	2.96	3.88	4.90	7.76	9.77	12.06	3.88	4.90	6.03
Injection pressure	(psi)	37710	29008	23206	37710	29008	23206	36695	29008	23496	36695	29008
	(bar)	2650	2040	1630	2650	2040	1630	2580	2040	1650	2580	2040
Holding pressure	(psi)	29878	23206	18275	29878	23206	18275	29298	23206	18855	29298	23206
	(bar)	2100	1630	1280	2100	1630	1280	2060	1630	1320	2060	1320
Screw speed (rpm)	400	400	400	400	400	400	400	400	400	400	400	400
Plasticizing capacity (oz./sec)	0.39	0.56	0.78	0.39	0.56	0.78	0.39	0.56	0.78	0.39	0.56	0.78
Nozzle touch force (US tons)			2.8			2.8			2.8			2.8
Nozzle movement distance (in)			12.99			13.78			13.78			13.78
Heating power (kW)	3.8	5.4	5.4	3.8	5.4	5.4	3.8	5.4	5.4	3.8	5.4	5.4

OTHERS

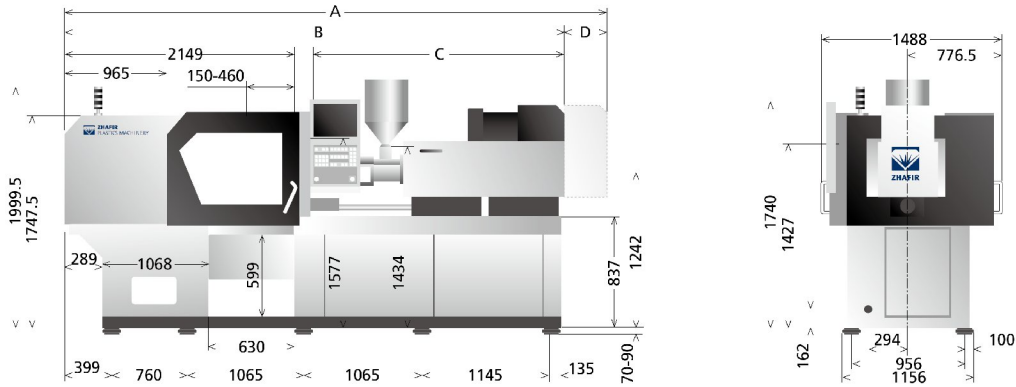
Connection power (kW)		31		20		36.7		25.7		
Hopper capacity (lbs GPPS)		35		35		35		35		
Machine dimension (l x w x h)	182	x	60	x	80	191	x	60	x	80
Machine weight (lbs)			11907					13010		



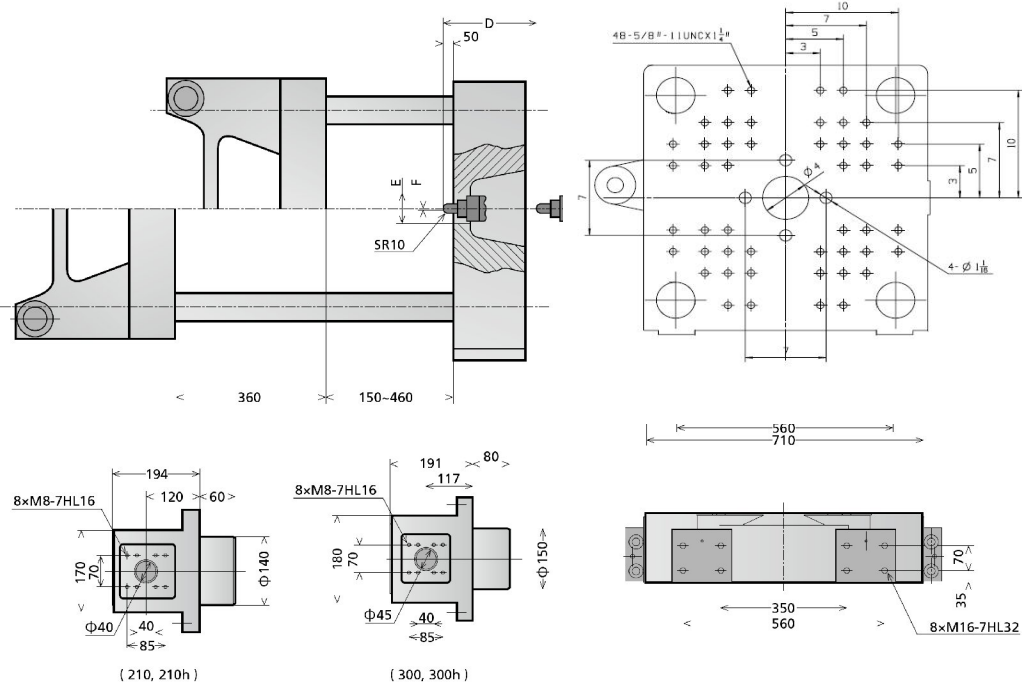
Specifications subject to change without notice.

unit: mm

Machine dimensions VE1200



Platen dimensions VE1200



	A	B	C	D	E	F
210, 210h	4595	4265	2008	330	Φ125	Φ3
300, 300h	4832	4482	2225	350	Φ125	Φ3