

VENUS SERIES ALL ELECTRIC INJECTION MOLDING MACHINE

VE600

Metric Datasheet

CLAMPING UNIT

Clamping force (kN)			600
Toggle stroke (mm)			270
Min. mold height (mm)			150
Max. mold height (mm)			350
Max. mold opening stroke (mm)			620
Space between tie bars (mm)	370	x	320
Min. mold dimension (mm)	240	x	205
Ejector stroke (mm)			70
Ejector force (kN)			19.6
Mold platen dimension (mm)	545	x	500

INJECTION UNIT	80h - high speed			80 - standard			120h - high speed			120 - standard			
	A	B	C	A	B	C	A	B	C	A	B	C	
Screw diameter (mm)	18	22	26	18	22	26	22	26	30	22	26	30	
Screw L/D ratio	20	20	17	20	20	17	20	20	17.4	20	20	17.4	
Shot size (theoretical)	19	36	50	19	36	50	36	58	78	36	58	78	
Injection weight (g)	17.3	32.8	45.5	17.3	32.8	45.5	33	52	70	33	52	70	
Injection speed (mm/sec)		350			150			350			150		
Injection rate (g/sec)	81	121	169	34	51	72	121	169	225	52	72	96	
Injection pressure	(Mpa)	280	220	157	280	220	157	280	220	150	280	220	150
	(bar)	2850	2240	1600	2850	2240	1600	2850	2040	1530	2850	2040	1530
Holding pressure	(Mpa)	220	175	125	220	175	125	220	160	120	220	160	120
	(bar)	2240	1780	1270	2240	1780	1270	2240	1630	1220	2240	1630	1220
Screw speed (rpm)	400	400	400	400	400	400	400	400	400	400	400	400	
Plasticizing capacity (g/sec)	3.8	6	8.8	3.8	6	8.8	6	8.8	13	6	8.8	13	
Nozzle touch force (kN)					14.7						14.7		
Nozzle movement distance (mm)					290						310		
Heating power (kW)	3.8	5.4	5.4	3.8	5.4	5.4	5.4	7	7	5.4	7	7	

OTHERS

Connection power (kW)		19			12			25			15.1
Hopper capacity (liter)		15			15			15			15
Machine dimension (l x w x h) (m)	3.73	x	1.35	x	1.83		3.98	x	1.35	x	1.83
Machine weight (metric ton)			3.3						3.7		



Specifications subject to change without notice.

VENUS SERIES ALL ELECTRIC INJECTION MOLDING MACHINE

VE600

English Datasheet

CLAMPING UNIT

Clamping force (US tons)		67	
Toggle stroke (in)		10.63	
Min. mold height (in)		5.91	
Max. mold height (in)		13.78	
Max. mold opening stroke (in)		24.41	
Space between tie bars (in)	14.57	x	12.60
Min. mold dimension (in)	9.45	x	8.07
Ejector stroke (in)		2.76	
Ejector force (US tons)		2.20	
Mold platen dimension (in)	21.46	x	19.69

INJECTION UNIT	80h - high speed			80 - standard			120h - high speed			120 - standard			
	A	B	C	A	B	C	A	B	C	A	B	C	
Screw diameter (in)	0.71	0.87	1.02	0.71	0.87	1.02	0.87	1.02	1.18	0.87	1.02	1.18	
Screw L/D ratio	20	20	17	20	20	17	20	20	17.4	20	20	17.4	
Shot size (theoretical) (cu. cm)	19	36	50	19	36	50	36	58	78	36	58	78	
Injection weight (oz. GPPS)	0.61	1.16	1.60	0.61	1.16	1.60	1.16	1.83	2.47	1.16	1.83	2.47	
Injection speed (in/sec)		13.78			5.91			13.78			5.91		
Injection rate (oz./sec)	2.86	4.27	5.96	1.20	1.80	2.54	4.27	5.96	7.94	1.83	2.54	3.39	
Injection pressure	(psi)	40611	31909	22771	40611	31909	22771	40611	31909	21756	40611	31909	21756
	(bar)	2850	2240	1600	2850	2240	1600	2850	2040	1530	2850	2040	1530
Holding pressure	(psi)	31909	25382	18130	31909	25382	18130	31909	23206	17405	31909	23206	17405
	(bar)	2240	1780	1270	2240	1780	1270	2240	1630	1220	2240	1630	1220
Screw speed (rpm)	400	400	400	400	400	400	400	400	400	400	400	400	
Plasticizing capacity (oz./sec)	0.13	0.21	0.31	0.13	0.21	0.31	0.21	0.31	0.46	0.21	0.31	0.46	
Nozzle touch force (US tons)			1.7			1.7			1.7			1.7	
Nozzle movement distance (in)			11.42			12.20			12.20			12.20	
Heating power (kW)	3.8	5.4	5.4	3.8	5.4	5.4	3.8	5.4	5.4	3.8	5.4	5.4	

OTHERS

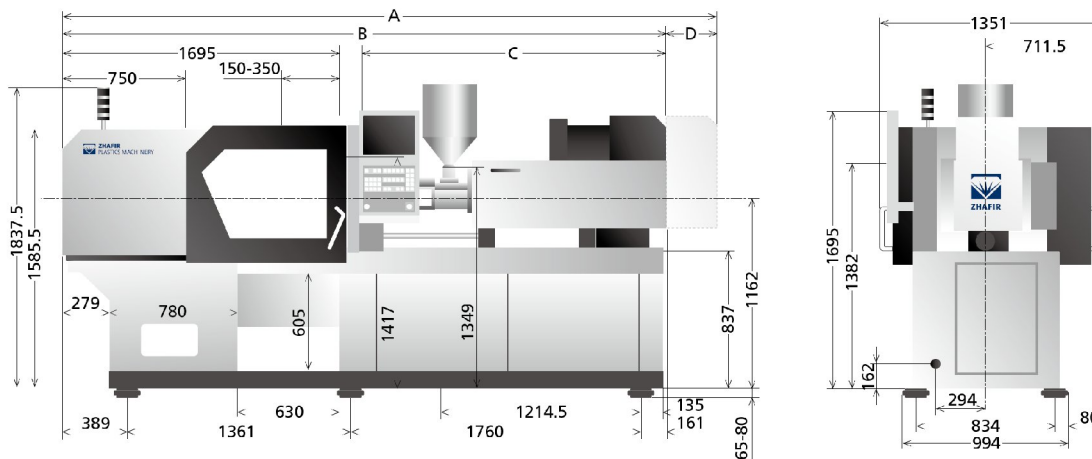
Connection power (kW)		19			12			25			15.1
Hopper capacity (lbs GPPS)		21			21			21			21
Machine dimension (l x w x h)	148	x	54	x	73		158	x	54	x	73
Machine weight (lbs)			7277						8159		



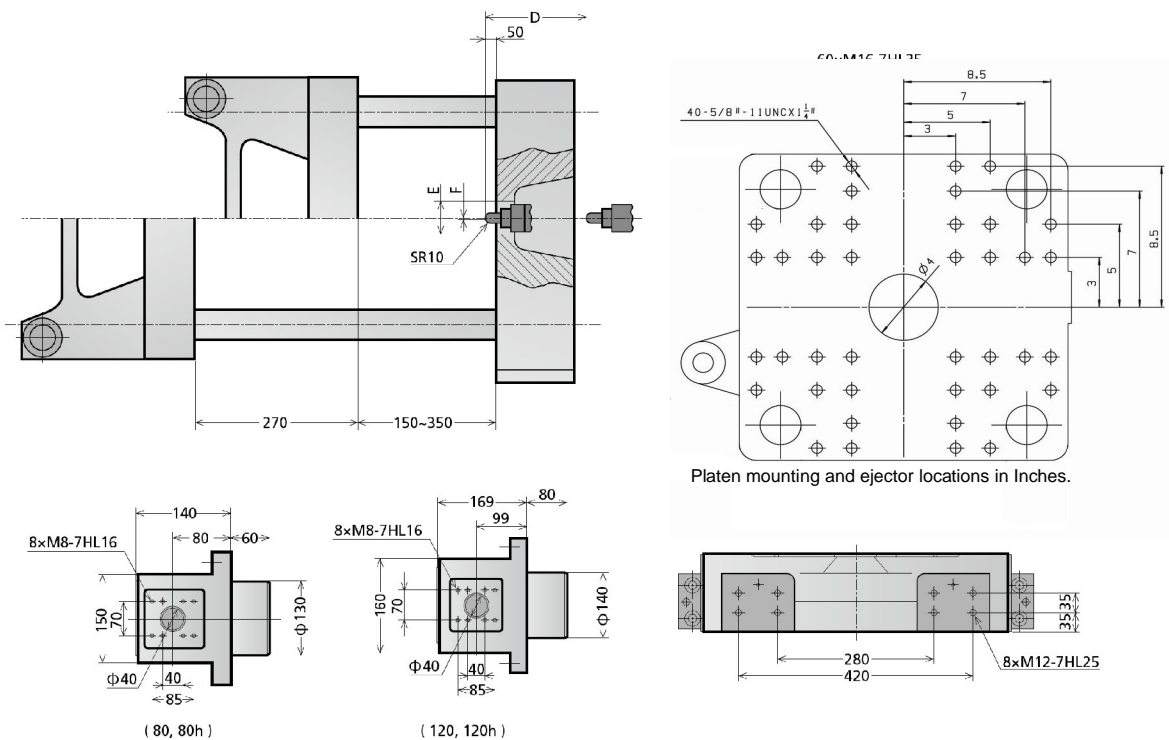
Specifications subject to change without notice.

unit: mm

Machine dimensions VE600



Platen dimensions VE600



	A	B	C	D	E	F
80, 80h	3750	3460	1625	290	$\phi 100$	$\phi 2$
120, 120h	3981	3671	1836	310	$\phi 100$	$\phi 2$